

BPK-SNAP blank plates for KEL-SNAP frames

& KDR-ESR enclosure gland plates / IP54



IP54

RoHS
compliant

REACH
COMPLIANCE

Made in
Germany

Blank plate BPK-SNAP to close cut-outs of pre-assembled [KEL-SNAP frames](#).

A snap frame can be closed, i.e. during transport to avoid entry of dust, as long as a KEL frame is not mounted.

The BPK-SNAP blank plate is simply snapped on the KEL-SNAP frame. There is no tool needed to remove it.

BPK-SNAP 16 and BPK-SNAP 24 for closing cut-outs of the KEL-SNAP mounting frames and unused Slide frames of the [KDR-ESR gland plates](#).

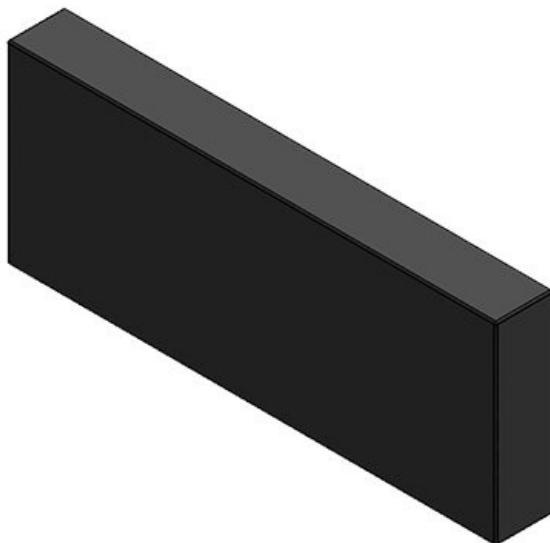
Specifications

IP rating (EN 60529)	IP54
Material	Polyamide
Flame class	UL94-V0, self-extinguishing
Operating temperature	-40 C° to 80 C°
Properties	silicone free, halogen free
Mounting options	Snap-in with KEL-SNAP

Advantages & Benefits

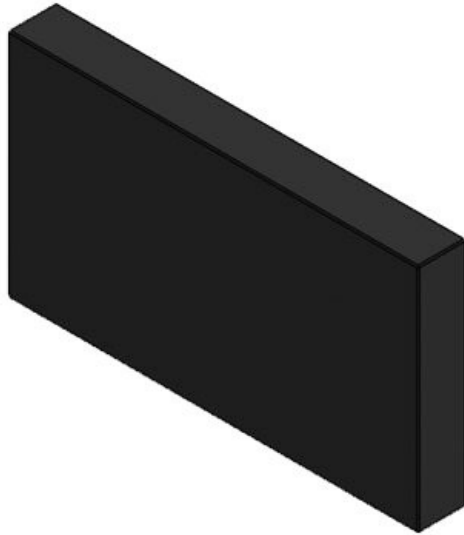
Product types & Sizes

BPK-SNAP 24



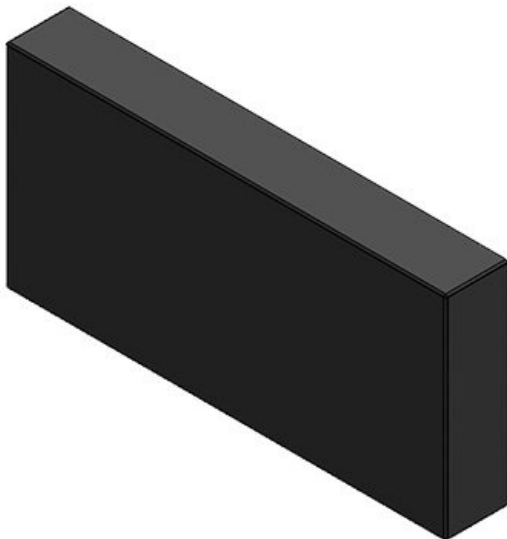
Part No.	42017
EAN	4251269307
	492
Package quantity	10
Length	147 mm
Width	58 mm
Height	17 mm
Suitable for cable entry systems:	KEL-SNAP 24, KEL-SNAP-S 24, KDR-ESR

BPK-SNAP-24-E



Part No. **42008**
EAN **4251269321**
511
Package quantity **10**
Length **147 mm**
Width **83 mm**
Height **17 mm**
Suitable for cable entry systems: **KEL-SNAP 24-E**

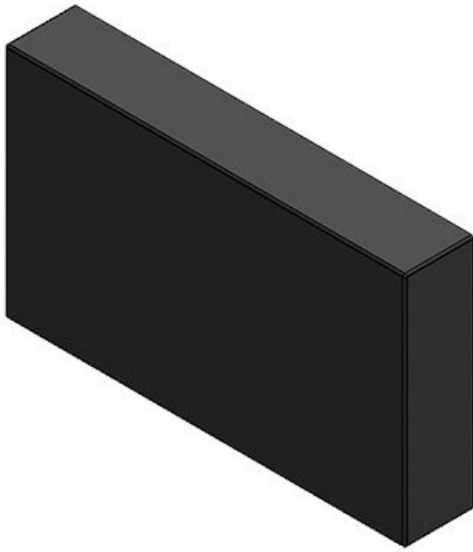
BPK-SNAP 16



Part No. **42007**
EAN **4251269307**
386
Package quantity **10**
Length **120 mm**
Width **58 mm**
Height **17 mm**
Suitable for cable entry systems: **KEL-SNAP 16, KEL-SNAP-S 16, KDR-ESR**

BPK-SNAP 10

Part No. **42004**
EAN **4251269307**
379
Package quantity **10**
Length **98 mm**
Width **58 mm**
Height **17 mm**
Suitable for **KEL-SNAP**
cable entry **10, KEL-**
systems: **SNAP-S 10**



BPK-SNAP-B

Part No. **42003**
EAN **4251269307**
362
Package quantity **10**
Length **73 mm**
Width **58 mm**
Height **17 mm**
Suitable for **KEL-SNAP-B,**
cable entry **KEL-SNAP-S-**
systems: **B**

